

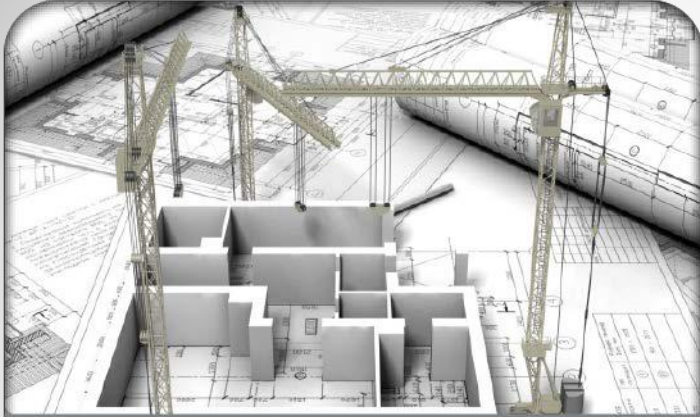
CONCRETE SOCIETY
OF SOUTHERN AFRICA

For the love of Concrete

Our Environment

- Population – (est.) 55.1 million
- Official Languages – 11
- Government - Constitutional multiparty, three-tier democracy.
- GDP – (est.) 1,3% in 2017
- Inflation – approx. 6.6% as at January 2017
- Prime Lending Rate – 10,5% as at March 2017
- Size of Construction industry – R130 billion (±USD10 billion)
- Budget 2017: Only 4% nominal, average increase in infrastructure spending for the next three years
- Cement sales – (est.) 13 million tons in 2016. Production capacity – 17 million tons
- Number of cement producers – 6

In a nutshell



Technically...

We promote excellence and innovation in the use and design of concrete and provide a forum for networking and for the sharing of knowledge and information of concrete



Practically...

We are a community of individual, like-minded professionals who keep ourselves up to date with the latest technology and thinking in concrete-related matters



Commercially...

We create business opportunities for our Company Members through exposure to the built environment and networking with industry decision-makers

Professional Links



American Concrete Institute
Always advancing

International Partner



ECSCA

Voluntary Association



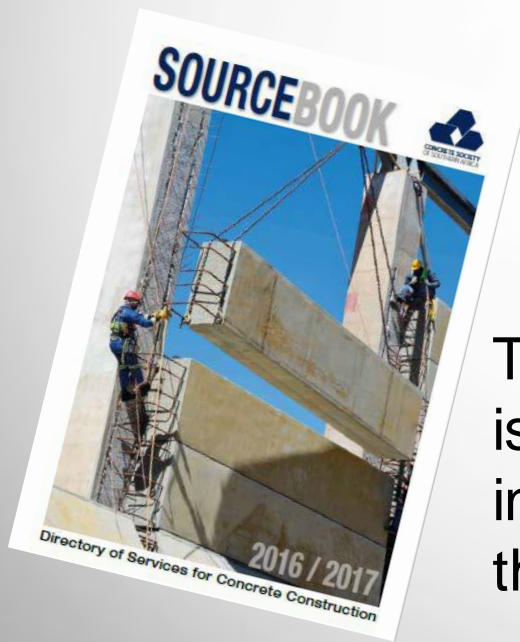
'Civilution' Initiative

1-day seminars held 2 or 3 times a year, covering topics such as:

- Durability
- Testing of concrete
- Latest Standard and Codes
- Precast structural elements
- Self-compacting concrete
- Concrete floors
- Water-retaining/excluding concrete structures
- Recycling of concrete
- Local research programmes on cement and concrete
- Sustainability of cement and concrete
- Architectural concrete
- Concrete masonry
- Structural grouts and grouting techniques
- Formwork issues
- Supplementary cementitious materials
- Chemical admixtures

Publications

Official journal **Concrete Beton** is published quarterly. Accredited by Dept. of Higher Education and training



The Concrete Society's annual **Source Book** is a handy (A5) reference directory of individual members' special areas of focus, their services and products



Communications

Website

<http://www.concretesociety.co.za>

LinkedIn



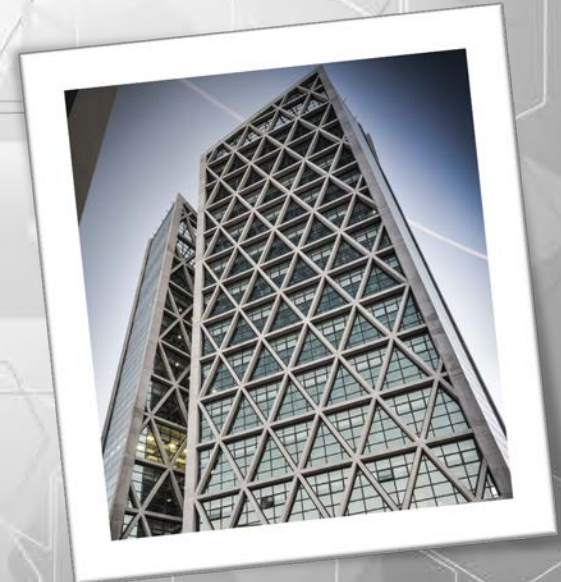
Facebook



Organised every two years in recognition and honour
of...

..Excellence in the Design, Innovation and Use of Concrete

- Successful entries are adjudicated on-site by experts in civil engineering, architectural and materials
- Awards are presented at a special gala weekend in the Drakensburg in early June
- Awards are for the structure and are presented to the team responsible for design and construction



Branches

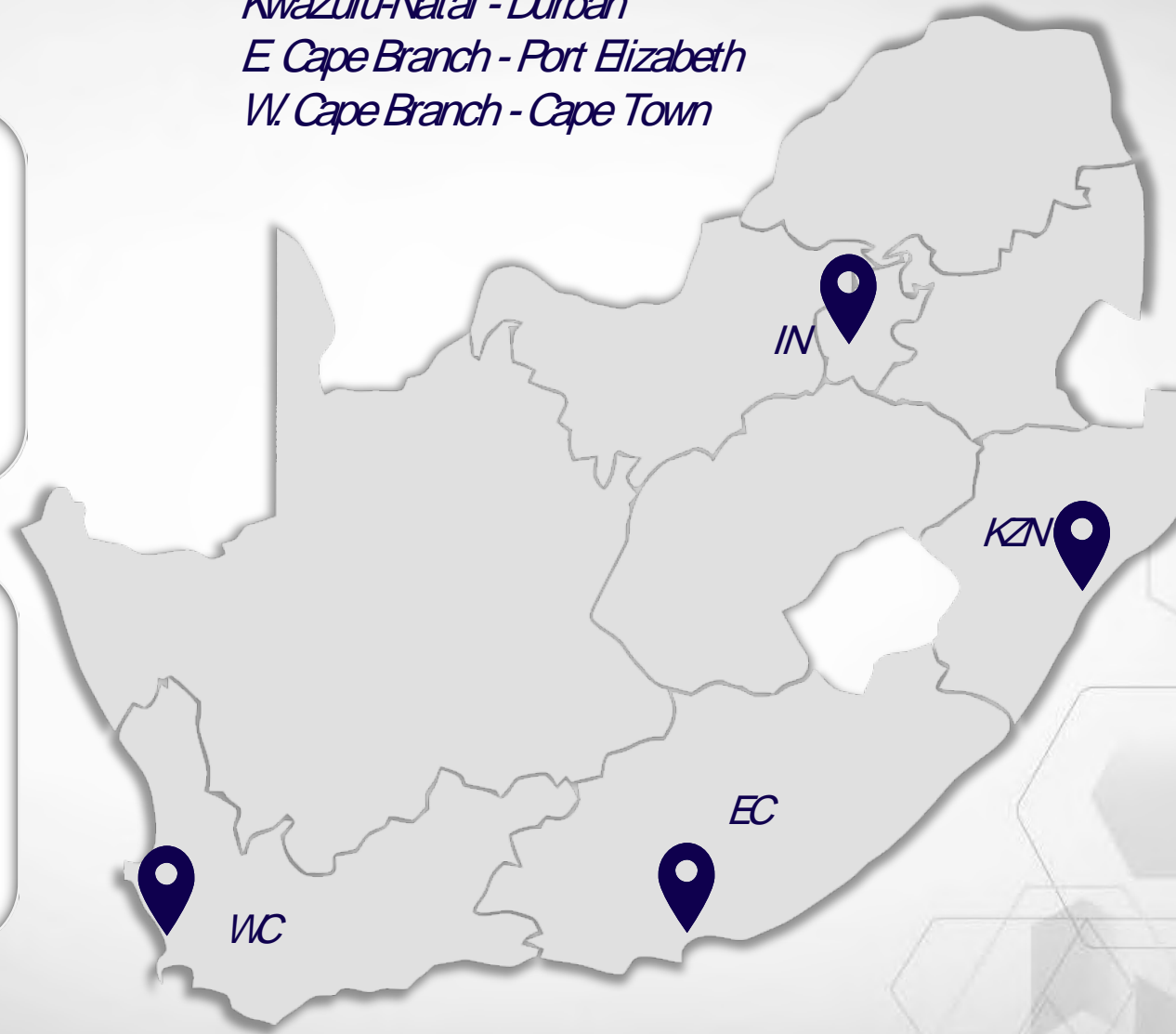
📍 *Inland - Johannesburg*
KwaZulu-Natal - Durban
E Cape Branch - Port Elizabeth
W. Cape Branch - Cape Town

Individual
membership on a
local basis

Chairperson,
Secretary and local
committee – all
volunteers

'Country'
membership status
to members away
from the centre

Own local
programme of
events tailor-made
to suit local needs



Branch Events

Mini-Seminars & Technical Meetings



Site Visits



Networking Functions



Student Investment

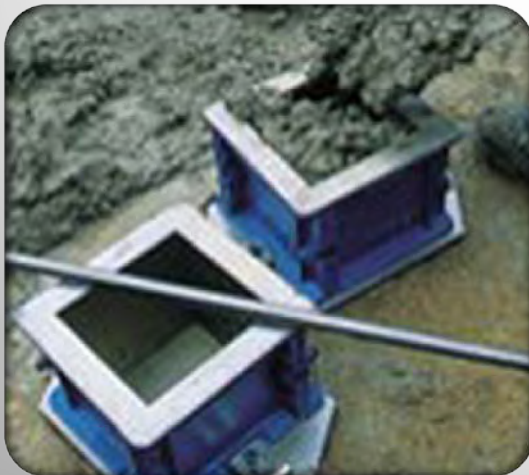
Concrete Boat Race Days



Egg Protection Device Competitions



Concrete Cube Competitions



Undergrad Research Award



Plus:

- 'Best student' prizes
- Bursaries
- On-line employment register

Awards for Excellence



Branch Chairman's Award



Branch Concrete Achiever of the Year

Individual Membership

Honorary

A person who has, inter alia, given long and other meritorious service to the Concrete Society of Southern Africa

Member

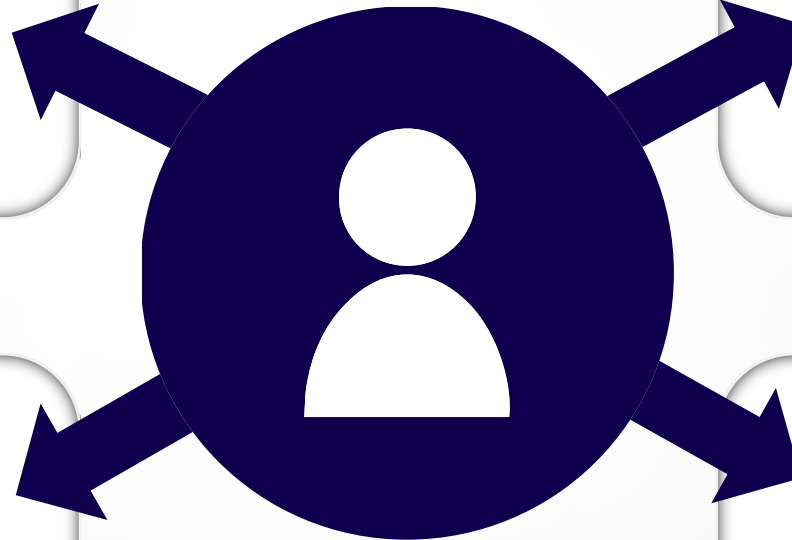
A person who accepts membership of the Society in his or her personal capacity

Retired

A person who either accepts membership of the Society or who continues membership in his or her personal capacity, after having retired from active employment

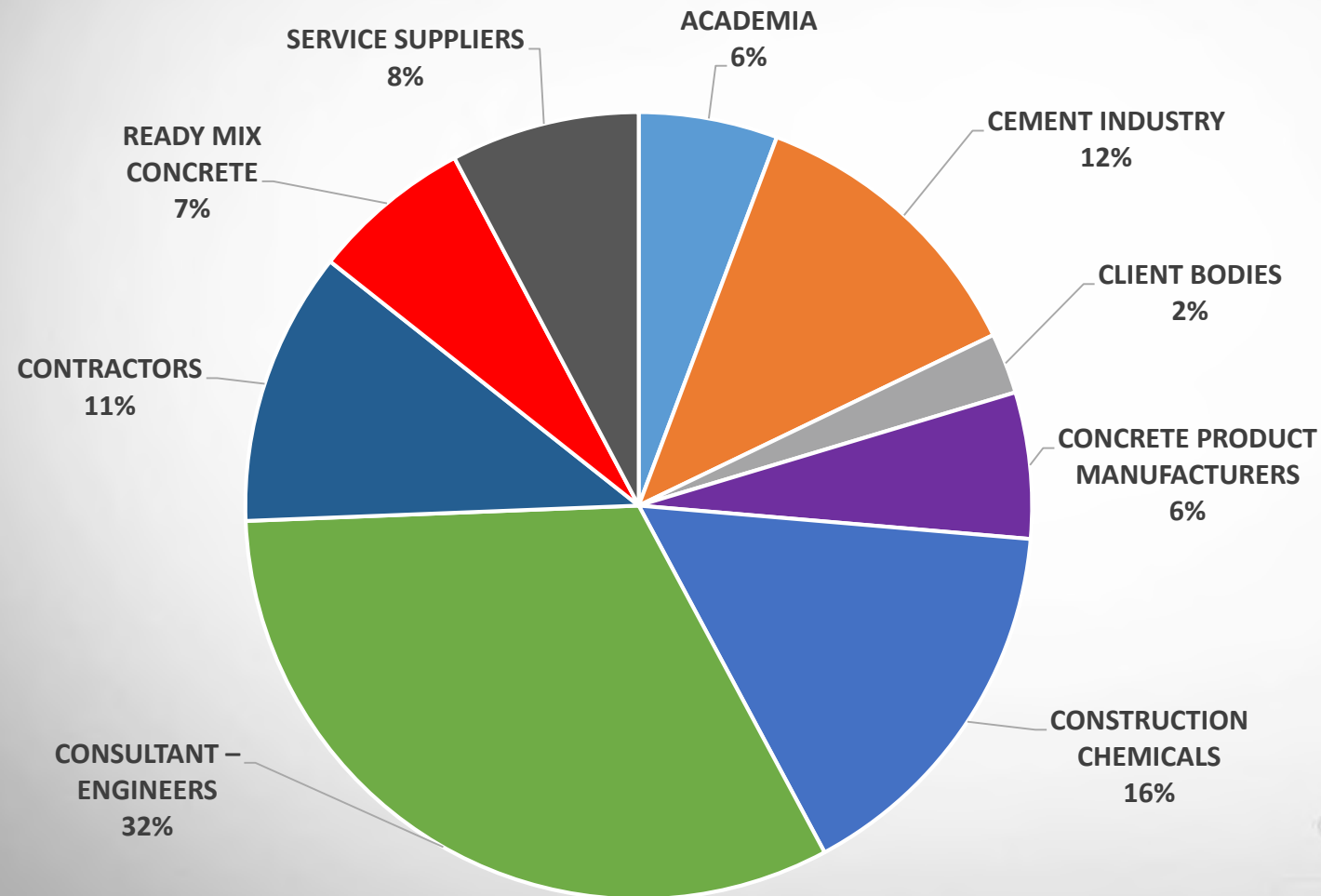
Country

A person who accepts membership of the Society in his or her personal capacity, who works and/or resides at least 200 km away from the relevant Concrete Society regional centre



Membership Analysis

2016 Members by sector



Company Membership



Academic Institution Membership

Students

- Participation in Society's student activities
- Networking with students of other academic institutions



- Linking students seeking employment with the industry
- Providing technical resources that may assist in research
- Providing a 'concrete' community, remaining with them through their careers



Sponsored by:



Staff

- Voting rights
- Right to nominate for Branch Committees
- 10 free issues of Concrete Beton
- Discount on seminar fees



- Access to Members' Only service on the website
- Being part of a concrete community keeping in touch with industry
- Keep up to date on latest technology and practice

Management Structure

Platinum Members:

- Nominated representatives

Regional Branches:

- Inland Chair
- Western Cape Chair
- KwaZulu-Natal Chair
- Eastern Cape Chair

Board of Directors (9) Non-Executive Directors

- President (Chair)
- Vice-President
- Immediate Past President
- 5 x Elected Directors

Executive Directors

- Chief Executive Officer

Board-appointed Committees

- Finance Committee
- Membership Committee
- Education Committee
- CPD Committee
- Editorial Committee

Head Office:

- Chief Executive Officer
- Administrator
- Membership & Events Coordinator

■ Volunteers

■ Full time Employees

Going forward

MEMBERSHIP
GROWTH –
ENGINEERS AND
CONTRACTORS

STRENGTHEN TIES
WITH SIMILAR
OVERSEAS
ORGANISATIONS

INCREASED
ACTIVITIES
THROUGH THE
COASTAL
BRANCHES

CONSOLIDATION
OF LOCAL
CONCRETE-
RELATED
ORGANISATIONS



CONCRETE SOCIETY
OF SOUTHERN AFRICA



CONCRETE SOCIETY
OF SOUTHERN AFRICA

Thank you

